



# NEWS UPDATE

SEPTEMBER 2010  
ISSUE 1

[www.sycafe.org](http://www.sycafe.org)



John Doyle

## Message from the Committee

Welcome to the first edition of Sorrel Youth Cafe's News Update. The Committee, our supporters, our sponsors and the young people of Mountsorrel have all been working very hard on this project and we are grateful to have this opportunity to talk to you about what we have achieved so far.

Please read on to find out about our newly hired youth worker and intern (we are thrilled to have Sarah and Tom join the team), fundraising events, news about the refit and information about how you can become involved in the project. On behalf of the Sorrel Youth Cafe Committee I would like to say a big thank you to everyone who has helped us come this far.

*John Doyle, SYC Committee Chair*

## Sarah Bibb - Cafe Youth Worker

My name is Sarah and I'm originally from Staffordshire. I moved to Leicestershire in 2006 for university, and really liked it, so decided to stay here after completing my degree.

I first got into youth work by volunteering at my local church when I was around 17. Fantastic support from local youth workers, and teachers helped me through a very difficult time during my teenage years, and I was inspired to get more involved in youth work.

After A Levels I moved down to Reading where I did a gap year at a local Youth Cafe. During my time there I got involved in a variety of drop in sessions, youth clubs and groups, and realised that I definitely wanted to pursue a career in youth work.

I graduated in 2009 from Oxford Brookes University with a First Class Honours degree in youth and community work and applied theology. During my studies I was employed as the



Sarah Bibb

youth worker at Leicester Cathedral where I developed a youth work programme.

I am really excited to have been appointed as the youth worker for the Sorrel Youth Café and can't wait to get started

*Continued overleaf...*

*Continued from front page...*

on the job.

During the first few weeks I plan to meet with some of the key people involved in the project and other local agencies, organisations and schools that we could work alongside to ensure the success of the Youth Cafe.

I think that the main function of the Sorrel Youth Cafe project will be to provide support and care for local young people through any issues and difficulties they may face. Crucially, the cafe will provide them with a safe space to hang out and chat with their friends - a place they can call their own.

I feel it's important to build up trusting relationships with the young people we come into contact with, and I want to let them have their say in how they would like Sorrel Youth Cafe to look, and what they would like to happen there.

I would also like to empower the young people by getting them involved in the funding process for the youth cafe, so they will be involved in every step of the journey.

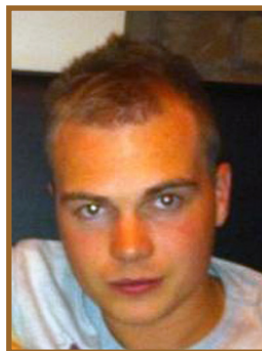
I think the work done to set up Sorrel Youth Cafe so far has been fantastic, and feel honoured to now be involved with it. I really believe that the Youth Cafe will be a big success with the young people in the area, and can also bring many benefits to the wider local community. I look forward to getting started and meeting many of you in due course.

## **GETTING INVOLVED**

Do you have any spare time you could donate to the Sorrel Youth Cafe? Whatever your skills, we can make use of them.

We need help with DIY, decorating, fundraising and operating the cafe. If your talents lie elsewhere we still need you - we just don't know it yet!

Please email Leslie at [leslie@sycafe.org](mailto:leslie@sycafe.org) and let us know what you can do.



Tom Konderak

### **Project Management**

The Sorrel Youth Cafe Committee welcome Tom Konderak to the team, who joins us as a graduate intern from De Montfort University. We have been lucky enough to get a national bursary which enables us to employ Tom to project manage the cafe through to opening.

Tom graduated from De Montfort University with a degree in Business Studies. He has recently worked as an intern for Business Builder (the commercial arm of Leicestershire Chamber of Commerce) and is working on making the Sorrel Youth Cafe project sustainable into the future, in the face of changes to third sector funding.

Tom said: 'I am fully relishing the challenge that managing this project poses!'

## Graffiti Project

35 young people participated in a graffiti workshop which took place over 4 days in March. The workshop was run by 2 professional artists and supported by local detached youth workers. We now have a fantastic art installation for the cafe and have discovered lots of local budding talent. The young people really enjoyed the workshop and are looking forward to lots more creative projects once the cafe opens.



## Garden Party



More than 90 people attended a garden party in mid July and raised nearly £600 for the SYC project. Lots of fun was had by all attending. Thanks to Mick and Christine Butcher for organising and hosting the event and to everyone who helped make it such a great success.

## Musical Fundraising

John Strange has presented a series of concerts at St Peter's Church to raise funds for the Sorrel Youth Cafe. As well as seeing local artistes, concert-goers have been treated to operatic performances from internationally renowned professional singers including Glenys Roberts, Michael Lessiter, Miguel Moncloa, Naomi Scott-Moncloa, Diana Vivian and Robert Bateman, and an evening of Shakespeare featuring Michael G Jones, formerly of the RSC. All the performers have generously donated their services free of charge. Look out for details of future events advertised locally.

## YOUNG VOICE

'I think the youth cafe will keep me out of trouble. When I'm on the streets I sometimes get carried away and involved with stuff. If I'm at the café I get to do things and I'm safe there.'

*Billy aged 13*

'The cafe helps you bring friends together.'

*Connor aged 11*

'The cafe will be somewhere to go after school to chill out.'

*Anonymous*

'The cafe is a great place to relax after school because it's quite stressful at school; but you can come home to the cafe to relax, the cafe is a chatting place.'

*Alannah aged 11*

## Open Day



Leslie Strange, Councillor Peter Osborne, Mrs Osborne and Nicky Morgan MP at the cafe open day.

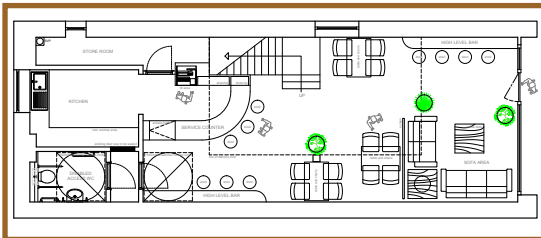
Visitors from all over Mountsorrel, and beyond, came to the cafe open day on 12th June. They came to find out more about the project and stayed to have their faces painted and have afternoon tea. It was a lovely day, with people of all ages, from all walks of the commu-

nity, coming together to show their support.

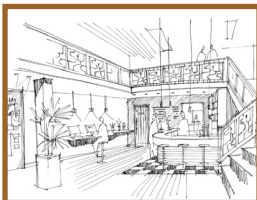


Danielle Drew 's face painting raised £24.

## Refit



John Hoyle, of John Hoyle Design Consultancy, has very kindly donated his time and expertise to design the concepts for the refit of the cafe. John's designs may give you some idea of how the cafe will look and we hope to start work on the refit shortly.



## 'THANK YOU

Thank you to all of our supporters and sponsors including:

Edna & Doug Ashton,  
Susie Bromwich,  
Anita Burton,  
Charnwood Borough Council PAYP,  
Charnwood Community Audit,  
The Church & Community Fund,  
Clymac Fire Detection Systems,  
Steve Cooper,  
Helen Jean Cope,  
Mr & Mrs J Craig,  
De Montfort University,  
Alex Doyle,  
Hilary Dyer,  
Roger & Elsie Fairhead,  
Grace Charitable Trust,  
Mr M Graham,  
Mr & Mrs H Goldstein,  
Mrs J Hill,  
Peter Hodson,  
John Hoyle,  
Ladies Evening,  
Lafarge Aggregates,  
Mr AM Lees,  
Leicester Leys Gym Club,  
Leicestershire County Council,  
Mountsorrel Heritage Group,  
Mountsorrel Memorial Hall Committee,  
Pat Moulding,  
Beryl & Harold Newman,  
Pine Shop,  
Relief in Need Fund,  
The Slate,  
Mike Strange,  
The Swan Inn,  
Top Gear,  
Richard Vincent,  
Mike Winter,  
Nick Wright.